



SPOTLIGHT

APRIL-MAY 2009

LETTER FROM THE EXECUTIVE DIRECTOR



Jim Hanushek

*For want of a nail the shoe was lost.
For want of a shoe the horse was lost.
For want of a horse the rider was lost.
For want of a rider the battle was lost.
For want of a battle the kingdom was lost.
And all for the want of a horseshoe nail.*

Even the smallest task that a volunteer does makes a difference in the success of Lemon Bay Playhouse. I want to use this opportunity to thank each of our volunteers for the work that they do. Although we have two part-time employees, it's the volunteers that are the lifeblood of our organization. Thank you! Thanks especially to Joy Kyper for helping to organize and coordinate our volunteers. Thank you, Joy!

Did you notice the change in the title of this article? Although I was eligible to stand for one more three-year term on the Board of Trustees, the Board and I determined that it would be best for our organization if I did not run. Oh, that doesn't mean I won't be involved. On the contrary, I will probably be more involved than before! Allow me to explain.

One of the things that granting agencies examine is whether or not a conflict of interest or even a perceived conflict of interest exists on a Board. With me on the Board and my wife, Ann, a paid employee of the organization, a perceived conflict existed. Faced, then, with the choice of my leaving the Board or Ann leaving her duties, my leaving the Board to assume the role of Executive Director (as a volunteer) became the obvious option.

The Board has defined the role of Executive Director such that I will still be doing most of the tasks I had been doing as President, plus a few more. The difference is that the Board controls all the finances and I won't have a vote on the Board.

Hanushek (Continued on page 2)



NOTES FROM THE ANNUAL MEETING

The Annual Meeting of the membership included balloting for a bylaws amendment and three candidates for the Board of Trustees.

To the 94 members who returned their ballots, thank you. To those who chose not to return their ballots, thank you for exercising your right to abstain. The amendments to change from quarterly meetings to an annual meeting were adopted with 83 Yes votes, 10 No votes, and one ballot left blank. All three candidates were elected with 90 or more votes. Janet Landis was re-elected to a second term, and Kelly Davids and John Dubowik were elected to their first terms.

The Annual Report for the 2008-2009 fiscal year was distributed. Additional copies are available at the Playhouse box office for those who are interested.

Although we had a very small group of members at the meeting, we had some interesting discussions while the ballots were being counted.

Paul Burke of Burke Management addressed the group, providing a synopsis of his work on developing our 5-year business plan. Ralph Barnes asked if there were some way to involve more younger people in the playhouse, particularly actors. He mentioned that the Play Reading Committee had to reject a number of plays because the cast required young characters. He wondered if Manatee Community College might be a source of younger actors.

Annual Meeting (Continued on page 3)

IMPORTANT MEETING DATES

BOARD OF TRUSTEES
Monday, April 20, 6:00 p.m.

ALL MEETINGS ARE HELD AT THE PLAYHOUSE
UNLESS OTHERWISE POSTED

SPOTLIGHT ON OUR VOLUNTEERS



“Don’t ever let anyone see you sewing on a button!” exclaimed volunteer **Pat Saracco**. That’s how she wound up being in charge of costuming the actors for our recent plays. Last season, Pat came to see the play, *All My Sons*, and was impressed with what she saw happening at Lemon Bay Playhouse. She was looking for an opportunity to volunteer in the evening, and was soon working backstage on *Taking Leave* and *Wait Until Dark*. It was while help-

ing one of the actors sew a button on his costume that someone asked if she’d like to help with costumes. Her fate was sealed.

Since then, Pat has become familiar with every thrift store in Englewood, Venice, and Port Charlotte. She has logged many miles searching for just the right costume for each actor, and made friends at Charlotte Players and Venice Theater. Pat has been in charge of costuming *The Play’s the Thing*, *The Trip to Bountiful*, and *Angel Street*. Those of you, who saw the plays, know what a fine job she did. She is now working on *Norman, Is That You?*, her first play that takes place in the present time.

In addition to her costuming work, Pat has become a regular volunteer in our box office. Originally from Paterson, New Jersey, Pat moved to California when she was eighteen and studied to be an x-ray technician. After many years in California, she headed back to New Jersey for a year, and then to Cape Coral, Florida for six years. Deciding to go for further study, she returned to New Jersey and became a radiation therapist.

After retiring in 2007, she headed for Englewood to be close to the beach. A resident of Foxwood, she is active in their bocce and shuffleboard teams and is in charge of their social coffee mornings. Pat can also be seen delivering food for Meals on Wheels. In addition, she is a member of the Coastal Wildlife Club’s Sea Turtle Patrol, and will soon be walking the beach several mornings a week, looking for signs of turtle nesting.

Pat’s advice: “Anyone who wants to be creative should come out and volunteer at Lemon Bay Playhouse. There’s always something new!”

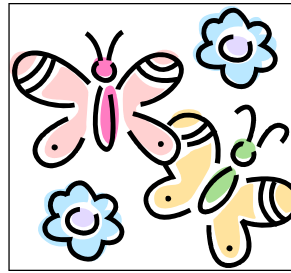
Hanushek (Continued from page 1)



Our interim performances have been quite successful, frequently drawing audience members to their first visit to Lemon Bay Playhouse. We’ve had several one-man shows, a musical-comedy team, both instrumental and vocal jazz concerts, and a performance by our own Readers Theatre. Most of the performers have been very talented people from Englewood and surrounding communities. Some of the bookings were initiated by us, others were a result of the performer contacting LBP.

We are currently working on a schedule of interim performances for next season. If you know someone, or know of someone whose performance would be appropriate for our theater, please let us know. If you’d like to see a particular type of performance, please let us know that, too. You can either call the box office at 475-6756 or send an email to info@lemonbayplayhouse.com with your suggestions. Your input is most appreciated!

AUDITIONS SET FOR BUTTERFLIES ARE FREE



This play, written by Leonard Gershe and to be directed by Michele Strauss, will hold auditions on Sunday and Monday May 3rd and 4th at 7PM in the Playhouse. The play is about a young bachelor trying to become a songwriter and escaping from an overprotective mother. He is in his own apartment for the first time, when a pretty actress moves in next door. She proposes

friendship and the removal of the connecting door. When mother and girl meet, they simply do not mix. The play will require two men and two women. Sides will be available in the box office as well as a script for in-house reading.

If you know any young actors, please share this great acting opportunity with them.

NORMAN IS THAT YOU? UP NEXT

Lemon Bay Playhouse’s fifth play of the 2008–2009 season is the comedy, *Norman, Is That You?* written by Ron Clark and Sam Bo- brick and directed by Rita Corn. In this extremely funny play, Ben Chambers, a dry cleaner from Ohio, played by Ron Bupp, arrives unexpectedly for a visit with his son Norman, played by Jim Walsh. Ben has been hoping for some solace since his wife, Beatrice, has run away with his own brother. After arriving at his son’s New York apartment, Ben finds no solace, but a few surprises, which lead to some hilarious moments.

The plot thickens when a prostitute, Mary, played by Wanda Malloy, appears on the scene. To make matters worse, Beatrice, played by Ann Shaughnessy, also shows up at Norman’s apartment.

A family therapist, Garson Hobart, played by Jefferson Halpin, tries to counsel Ben, but his efforts are of little avail. The problems that ensue are sure to entertain and keep the audience laughing.

Don’t miss this one! *Norman, Is That You?* runs from April 29 to May 17.



Cast and Director of *Norman, Is That You?* Seated l-r: Ann Shaughnessy, Director Rita Corn, Wanda Malloy. Standing l-r: Jefferson Halpin, Ron Bupp, Jim Walsh. The play runs from April 29th through May 17th.

THE LBP 2009-2010 SEASON

Many of you have now received our season ticket brochure for the coming season. You know that we have scheduled an exciting lineup of plays. Thanks to all of the Play Selection Committee members for their, time, effort, and results! For those who have not received the brochure but would like one, it is available at the box office, in the lobby, and on our website. The dates and titles of the plays follow:

September 2 - 20, 2009

Murder by Misadventure by Edward Taylor – Mystery

October 28 - November 15, 2009

Mary, Mary by Jean Kerr – Comedy

January 6 - 24, 2010

Southern Comforts by Kathleen Clark – Comedy

March 3 - 21, 2010

The Mousetrap by Agatha Christie – Mystery

April 28 - May 16, 2010

Enchanted April by Mathew Barber – Romantic comedy

June 23 - July 11, 2010

Painting Churches by Tina Howe – Comedy/Drama



The ticketing system that we implemented this past season has been very successful. Compared to our previous system, it's far more secure, it makes seat selection easier for our patrons, it allows internet purchases, and it maintains an accurate accounting of ticket sales. In addition, it enables patrons to exchange tickets by simply calling the box office. However, we pay a price for those benefits. This past year, we absorbed most of the cost, recouping only a portion of it with the processing fee. This season, we are asking our audience to help cover the cost. We are increasing the price of each ticket by \$1 to cover that cost but dropping the processing charge. The price of a season ticket at \$86, still saves the purchaser \$10 over the cost of individual tickets. Individual adult tickets will be \$16, and individual student tickets will be \$11.

The deadline for renewal of current seats is May 31. All season tickets sales end August 1. Single tickets will be available on our website and at the box office beginning August 3.

Annual Meeting (Continued from page 1)

In that regard, we contacted Ken Erickson, the head of the Dramatic Arts Department at the college. His reply explains the absence of MCC students at LBP: "The students we have here are kept pretty busy. They are in rehearsals outside of class time Tuesday thru Friday evenings from 7-10 pm and Saturday 9-12 for crew calls and 1-4 for rehearsal. They go from one show to the next, 2 a semester. The only time they are available for outside experiences is during the summer."

Sherie Ragan proposed the possibility of doing a joint production with Lemon Bay High School as a way to involve more younger people in LBP. (Ed. Note: An interesting prospect if an appropriate vehicle can be found and the logistics can be worked out!)



As soon as the dinner bell rang the line began to form.



Dessert was waiting for the crowd.



Time for volunteers to get to know each other.



96 W. Dearborn Street
Englewood, FL 34223

Celebrating our 22nd Season!

2008-2009 SEASON



WAIT UNTIL DARK by Frederick Knott
THE PLAY'S THE THING by Ferenc Molnar
(Adapted by P.G. Wodehouse)
THE TRIP TO BOUNTIFUL by Horton Foote
ANGEL STREET (Gas Light) by Patrick Hamilton
NORMAN, IS THAT YOU? by Ron Clark &
Sam Bobrick
BUTTERFLIES ARE FREE by Leonard Gershe

September 3-21, 2008
October 29 - November 16, 2008
January 7-25, 2009
March 4-22, 2009
April 29 - May 17, 2009
June 24-July 12, 2009

Layout/Photography: Rob Davis **Proofreader:** Ann Hanushek
Contributors: Jim Hanushek, Ann Hanushek, Rita Corn, Bob LaSalle
Printing and mailing service provided by SayAds.biz, Inc.

LBP Box Office is open Monday-Friday, 10:00 a.m. to 2:00 p.m. Phone 941-475-6756

Visit our website at: www.lemonbayplayhouse.com

"It is the mission of Lemon Bay Playhouse to enrich Englewood and surrounding communities through theatrical productions, volunteer opportunities, education and training in the performing arts, and to provide a venue for other cultural activities."